



elizabethleigh

earring styling guide

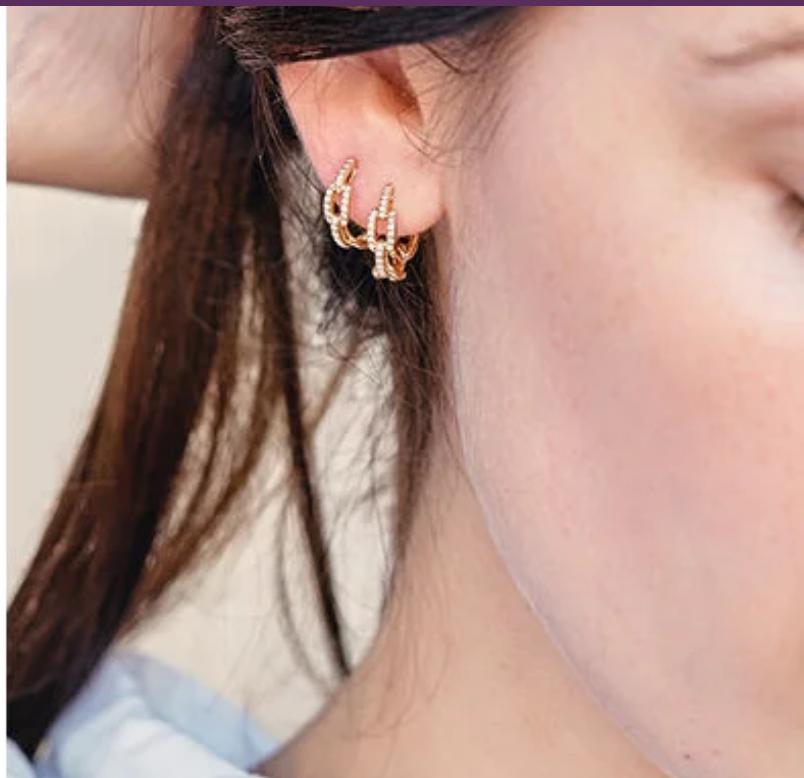
It may be one of the oldest forms of human adornment, but the humble earring has evolved. From simple hoops to statement climbers and mix and match studs, this styling guide helps explain the modern way to dress your ears.

KNOW YOUR EARRINGS

You know your hoops from your studs, but you may need to swot up on some more unusual terms; 'Huggie' — a small hoop that 'hugs' the lobe of the ear; 'Climbers' — earrings that sweep up the ear from the lobe; 'Ear jacket' — an ornamental piece that threads onto the earring post behind the lobe, hanging beneath the ear.

MIX AND MATCH EARRINGS

Look around and you'll see that from the runway to the street, when it comes to earrings, anything goes; single, mismatched, multiples. Spurred on by celebrity piercers Colby Smith and Maria Tash, the new look is all about curation. If you have multiple piercings, don't be afraid to mix and match styles — try a combination of delicate studs, or pair a statement design with a small hoop.



updo

An elegant or relaxed updo asks for dangle earrings, especially chandelier style. You can also try teardrops if you want to go for a more subtle look.



braids + ponytails

If you like to wear braids or a simple ponytail, try clusters or huggies. Since most of your hair is up, they will look nice hanging from your ears and provide balance to your face. A side braid, however, looks amazing with hoops or, if you want to go for a bolder look, with mismatched earrings. Just wear a simple linear drop earring on the side opposite to your braid and a tiny stud on the other side.

half up half down

If you are wearing your hair half up, half down, you can balance your features with a delicate pair of stud earrings. For a cool 90s look, choose a pair of medium-sized gold hoops.



heart shaped face

You can counterbalance the sharp shape of your chin with teardrop or chandelier earrings. Because the earrings are wider at the bottom, they will fill in the lower part of your face, making it more balanced. Statement earrings also look great with a heart-shaped face. To learn how to style statement earrings, read this [article](#).



long narrow face

For this type of face, it is best to wear circular earrings that will emphasize your face's width, such as short dangles, hoops and clustered earrings.

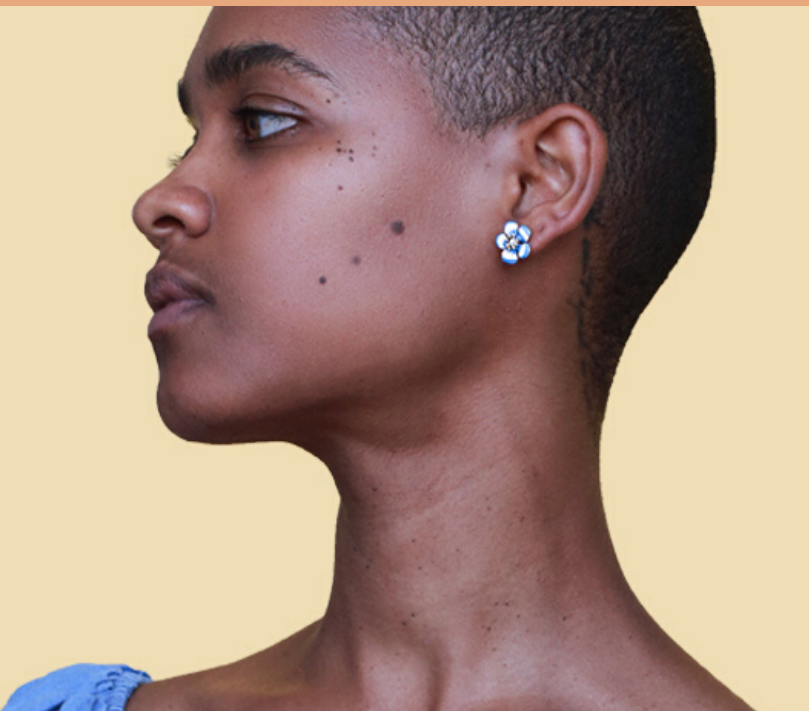
square face

To soften the hard edges of your face, you can go for round-edged earrings. Stay away from square studs and other types of earrings that have sharp corners and reinforce squareness.



inverted triangle face

This type of face shape is characterized through a wider forehead that narrows down toward a pointy chin. Very often confused with the heart-shaped face, the inverted triangle shape face can be balanced to make it seem as your jawline is wider. Chandelier and teardrop earrings are the styles that can create this illusion and accentuate your beauty.



oval face

This type of face can allow you to wear almost any type of earrings. Simple studs and geometric drop earrings accentuate your lovely cheekbones and other facial features.

round face

For this type of face, all styles of drop earrings will help elongate your face and also make it look slimmer. It is very important to avoid hoops, button studs, and large circular earrings which will only emphasize the shape of your face.





save 20%
with code
earringsrock



elizabeth leigh
elizabethleigh.com
ohwhatfun@elizabethleigh

